

# Cummins Rural Directory Map

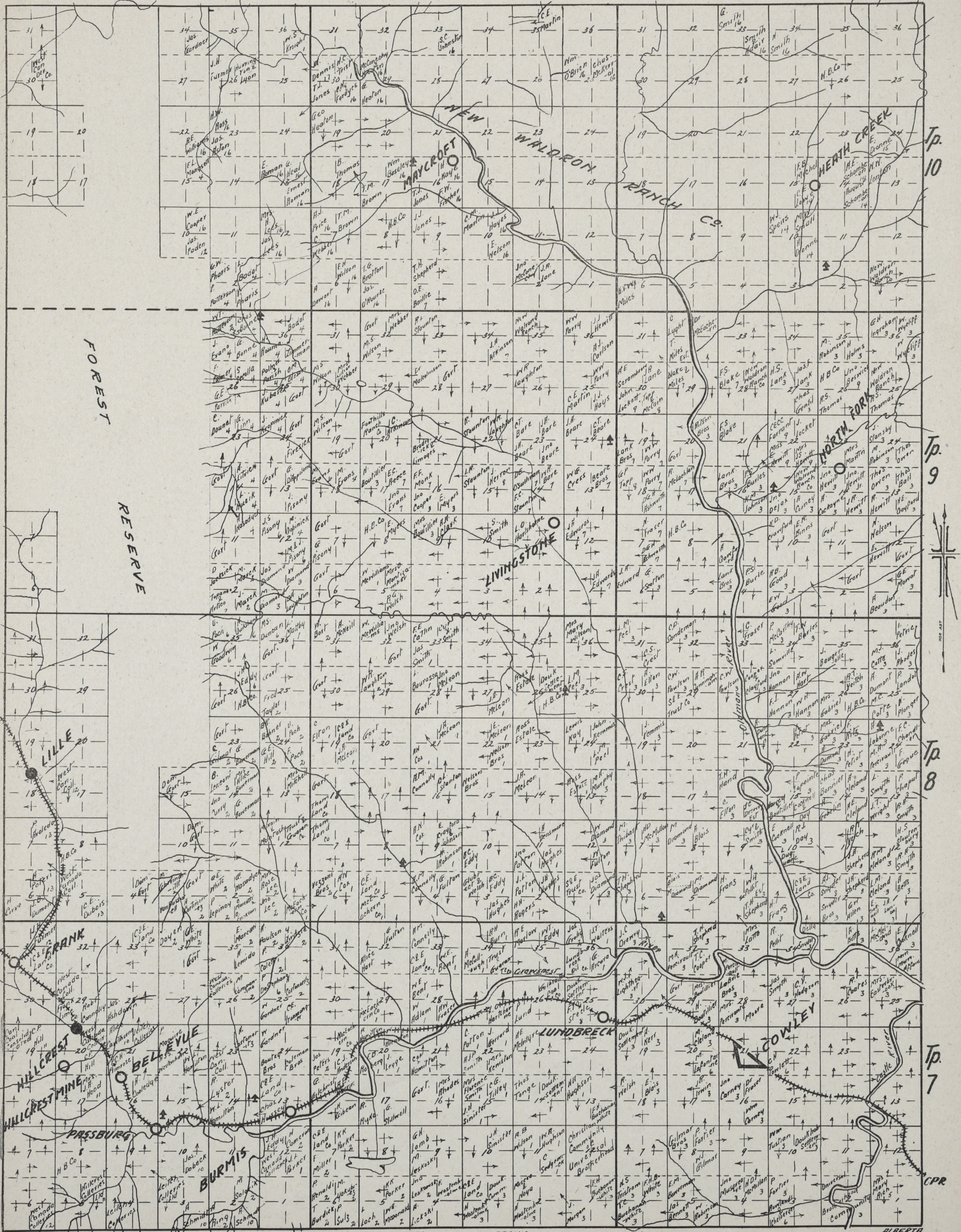
Published by **CUMMINS MAP COMPANY** 404 Chambers of Commerce  
Winnipeg Man.

M. S. ARNIEL, Manager

Price 1.00

We have these Maps for any part of Manitoba, Saskatchewan or Alberta. Also Mailing Lists of all kinds. Write us for Map Making, Mounting, Draughting, Etc.

The small figures under the name indicate the number of the Post Office.



1 LUNDBRECK 2 BURMIS 3 COWLEY 4 LINDON 5 PINCHER STATION 6 LINDON 7 LIVINGSTONE 8 NORTH FORK 9 HILLCREST 10 PASSBURG 11 HILLCREST 12 BLAIRMORE 13 FRANK 14 HEATHCREEK 15 NORTH FORK 16 MAYCROFT 17 FURMAN  
R. 3 R. 2 R. 1 Cummins Map Co. No. 30 REGINA, SASK.